

**NOW CAN  
ADJUST TIRE  
'CONTACT'  
ANGLES**

# FINALLY FRONT & REAR ONGOING

IMPROVE TRACTION & EDGE TIRE WEAR  
**Camber, Caster Adjustment**

**AMG W205 C63 'S' (Coupe) #502326-1K**

## REAR CAMBER (& EXTRA TOE)

**K-MAC "Precisely Adjustable"** - providing '4' times the adjustment range of "one offset" plates  
Single Wrench - "**accurately**" under load

K-MAC BUSHES - ALSO HAVING 2½ TIMES THE LOAD BEARING AREA

**\*K-MAC KIT ALSO INCLUDES 'OUTER' TOE ARM BUSHES TO ELIMINATE FLEX - PREVENT TOE CHANGE**  
COUPE Toe arms H/Duty but end mounts are soft rubber

### TOOLS REQUIRED

**WRENCH:** 2 x 18mm, 2 x 16mm **MULTI GRIPS:** 1  
**SOCKET:** 1 x 18mm E, 1 x 18mm (Ext.), 1 x 12mm (Multi Spline)

**Installation should be carried out by a qualified person**

**A.** Vehicle on 4 post hoist to aid reconnection of inner bolts step J.

## **B. CAMBER K-MAC - FIT WITHOUT ARM REMOVAL**

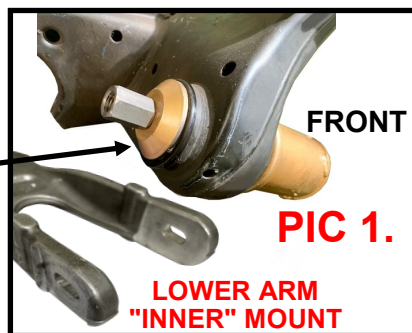
As indicated in Pic. 2 the lower control arm inner forks each have jacking lug located near to "inner" slot. Important jack positioned "so clearance" - to fully insert (#1) slide plates.

**C.** For ease of bolt removal - jack / raise arm only **sufficient to take up / support load.** Make sure load is "**EVEN**" on both forks (for ease of bolt removal).

**D.** Remove the inner bolt initially quarter way and again re-adjust jack - (if not easy to tap out) - bolt head should be horizontal.

**E.** After bolt removal slowly lower jack - sufficient only for end of arm to expose the bush in frame. Then install the KMAC threaded rod tool from FRONT (as in Pic) and large washer on REAR to extract bush (18mm ext. socket can be tight - use impact wrench if available).

**F.** Clean hole and insert the new K-MAC elastomer bushes. Now lubricate the steel inner bushes (only) with silicone grease supplied and insert.



**G.** For ease of "bolt entry" rotate bush 'D' holes to 6 o'clock position. (Flat then is to bottom).

**H.** Position each pair of the STEEL folded tab plates as in pic 2 (#1). Then use multi grips to close the outer tab so seated in channel (#3).

**I.** New cam washers place under head of bolt (then prior to tab lock washer and nut).

**CAM WASHERS**  
INSERT / ADJUST WITH 'OFFSET' DOWN  
SO INNER BUSH HAS CLEARANCE / TRAVEL ON FULL ADJUSTMENT

**J.** Raise and insert arms (insert bolt with flat at bottom so lines up with 'D' hole - See step G.)

## **K. EXTRA TOE - SMALL ARMS FRONT OF SUBFRAME**

Unbolt arms - Then bench vice and the '2' small tubes - Large tube to support arm small tube to press out the OEM Toe bush on each side. Press in the new K-MAC bushes. (till "**EVENLY**" centered)  
**\*ALSO THE 2 'OUTER' TOE BUSHES**

Bolts to simplify removal (fuel tank side only) undo nut, push bolt forward so clearance - allowing to cut head off using disc blade.

Support Tube Toe Bush Pusher Tube

**L.** Reconnect Toe arms (K-MAC bolt head to Rear) with cam washers supplied and 'tab' lock washers under each nut

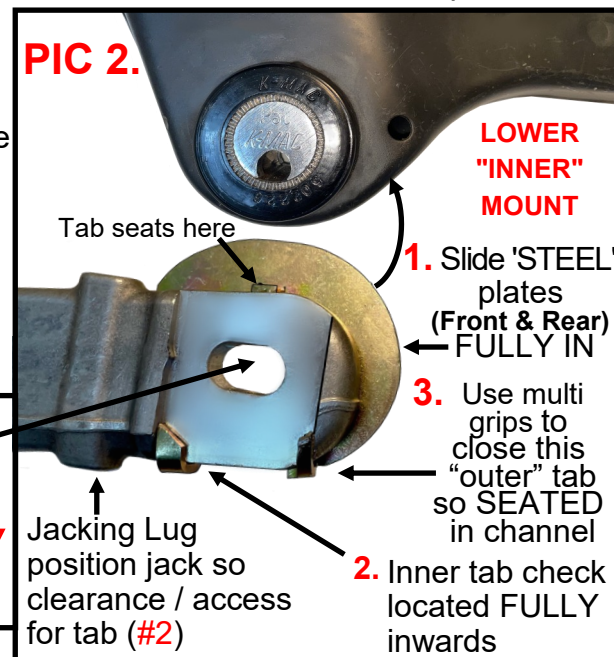
**WHEEL ALIGNMENT ("WITH TIRES ON - SLIDE PLATES")**  
**SIMPLY ROTATE BOLT HEADS - UNIQUE K-MAC PATENTED SYSTEM**  
(ALLOWING ULTIMATE ADJUSTMENT - "UNDER LOAD")

Make sure nuts are loose and rotate the bolt heads for both Camber and Toe. Once required settings obtained, hold head of bolts in this position and tighten the nuts to **110Nm (80 ft/lbs)**.

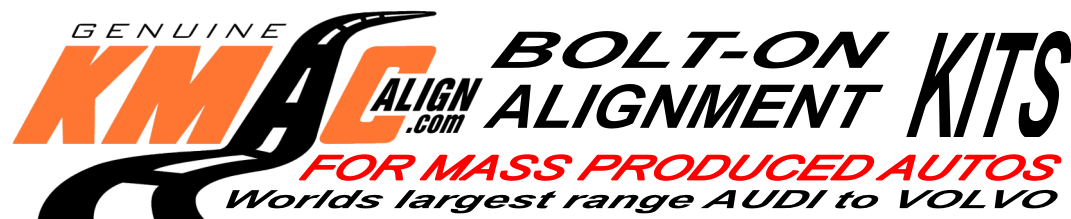
Then fold one of the 3 lock Tabs that lines up with the side of a nut  
**ESSENTIAL RECHECK MAKE SURE 4 NUTS ARE FULLY TIGHT**

(Loose Nuts Cause Noise Noticeable Camber Change)

**ALSO STEP 'J' - CAM WASHER OFFSETS 'DOWN'**



| PAGE  | CHASSIS QUICK REFERENCE ALL '68-'24 Incl. AMG, Black Series                             |  |   |              |  |
|---|---|--|---|--------------|--|
|   | FINALLY - ON GOING / PRECISE ADJUSTMENT Resolve Steering Pull, Premature Edge Tire Wear |  |   |              |  |
| FRONT (CAMBER & CASTER) ● "EXTRA" Performance driving / Track days STRUT TOPS. see below ADJUST (Front Upper 'A' Arms. - Page 7-11) |   |  |   |              |  |
| 88  | '10-'18   | W212, E200 - 550, E63, E65/S AMG   | C218 CLS 250 - 550, 63, 65 AMG          | #502916 K    |  |
|   | '10-'18   | W212, C218 4MATIC  |   | #503616 K    |  |
|   | ● Also Adjustable Strut Top Mounts - If Coil Spring Suspension                          |  | Stage 2 (Street/Race)                   | #502916-2L   |  |
| ** ALSO UPPER ADJUSTABLE WISHBONE BUSH LISTING - SEE BOTTOM OF PAGE 6 & 7   |   | Stage 3 (Full Race)  | #502916-3L                              |              |  |
| 7   | '15-'24   | W205 / A / C / S, **C180 - C350 4MATIC - **C220 - C450 / C43 AMG C63/A/C, 63S AMG    | AMG GT4 Door ALL 43 to 63/S #503416-3   | #502816 K    |  |
|   | '21-'24   | W206/e 4MATIC - C180 - C300 C200 - C400e / C43 AMG                                   |   | #503416 K    |  |
| 7   | '16-'24   | **EQC, W213 E43/53/63, E220-450, **C253/X GLC, AMG / 4MATIC                          |   | #503316 K    |  |
|   | '13-'24   | **W213 E200-350, **C238, **C217, **C257  |   | #503116 K    |  |
|   | '13-'20   | W222/S, 63/65 AMG, Maybach ('15-'20). #503016K W223 Maybach                          |   | #503216 K    |  |
|   | '21-'24   | W223, S350-680, AMG 63, Maybach  |   | #503716 N    |  |
| 7   | '02-'20   | R172, W204, C207, AMG, 'Black' (C209 AMG, Black #503516K. 270 - 500 #502216K)        |   | #502616 K    |  |
|   | ● Also Adjustable Strut Top Mounts - for C209 'Black' Series (only)                     |  | Stage 2 (Street/Race)                   | #502616-2 L  |  |
|   | ● Also Adjustable Strut Top Mounts - If Coil Spring Suspension                          |  | Stage 3 (Full Race)                     | #502616-3 L  |  |
|   |   | W204/X, C207/A Incl. AMG, 'Black' Series   | Stage 2 (Street/Race)                   | #503016-2 L  |  |
|   |   |  | Stage 3 (Full Race)                     | #503016-3 L  |  |
| 9   | '02-'20   | W203/A, W211, C209 (CLK 270 - 500), C219, R171, R230, R231                           |   | #502216 K    |  |
| 9   | '93-'10   | R170, W202, C208 / A   | Incl. Chrysler Crossfire                | #502016 J    |  |
| 9   | '96-'09   | W210 (502116K)   | "4MATIC" - W210, W211/S, W220           | #502416 K    |  |
| 9   | '06-'14   | W216, W221 #502316.  | '00-'06 W215 CL, W220/S                 | #502516 K    |  |
| 9   | '91-'99   | W140, Maybach ('97-'12) Have adjustment KMAC doubles adj. range                      |   | #501916 K    |  |
| 10  | '82-'01   | W124, R129, W201 Have adjustment KMAC doubles adj. range                             |   | #501716 J    |  |
|   | ● Also (124,129) Adjustable Strut Top Mounts (#501716-2 L, #501716-3 L)                 |  |   |              |  |
| 10  | '77-'91   | W123, W126 Camber only   | Have adjustment KMAC doubles adj. range | #501616 H    |  |
| REAR (CAMBER & Extra TOE) ● Upated Bushings 6 Multi link rear arms Page 14 Upper Camber arms (and extra Toe) Page 12-14             |   |  |   |              |  |
| 12  | '14-'24   | Coil Susp. W205 (all incl. AMG C43 *C63/S) W213, C238, 253, 257 (#502226K)           | AIRMATIC                                | #502326 K    |  |
| 12  | '14-'24   | W205 (*C63/S Coupe #502326-1K)   | Above AMG & GT 4 Door                   | #502326-2K   |  |
| 12  | '21-'24   | W206/e C180 - C300   |   | #503126 K    |  |
| 12  | '00-'18   | W204 incl. AMG, Black Series, C207, W212, W215, C218, R231                           |   | #502126 K    |  |
| 12  | '01-'11   | W211, C219, R230 Airmatic incl. AMG #502526K. W211, C219, R230 (Coil Susp / 4matic ) |   | #502126-1 K  |  |
| 12  | '06-'24   | W216, 221, 222/S, C217 Maybach 15-20 (#502626K).                                     | W223 Maybach                            | #503726 K    |  |
| 12  | '01-'20   | C209 / A ('01-5/04), R171, R172  | (33mm Lower Arm/Inner bush)             | #502026 H    |  |
| 12  | 6/04-09   | C209 / A (Black Series 501526J)  | (51mm " " " " " )                       | #501926 K    |  |
| 13  | '91-'06   | W140, W220 (Maybach '02-'12 #501726K)  | (51mm " " " " " )                       | #501626 K    |  |
| 13  | '82-'10   | W124/C, R129, R170, W201, W202, *C208, W210, Chrysler Crossfire                      |   | #502026 H    |  |
|   |   | (300C, Charger #502726 K)  | *A208 Convertible                       | #501426 i    |  |
| 13  | '04-'07   | W203 (from A555897, F457375, R131145)  | (51mm Lower Arm/Inner bush)             | #501926 J    |  |
| 13  | '00-'04   | W203   | (33mm " " " " " )                       | #502026 H    |  |
| 14  | '68-'91   | R107, W114, W115, W116, W123, W126   |   | #501826 J    |  |
| SUV, SPRINTER, VITO, A/B/CLA/GLA AMG FRONT REAR   |   |  |   |              |  |
| SUV   | **W167 / X, V167 GLE/GLS, C293  | Front also replaces / strengthens the (costly) Lower / Inner Rear bushes!            | 11 #504216 P                            | 14 #504226 N |  |
|   | **W166 / X, C292  |  | #504016 N                               | #504026 K    |  |
|   | **W164 / X, ML W251   |  | #503816 N                               | #504026 K    |  |
|   | W163 (FRONT - Camber only)  |  | #503916 i                               | 15 #503926 J |  |
| Sprinter  | W910 ('19-'24) incl. 'E' Strut Mounts Camber & Caster                                   |  | 11 #505816 L                            |              |  |
|   | W906 Camber & Caster '4' lower arm bushes)  |  | #505716 K                               |              |  |
|   | W903 ('96-'14) Camber & Caster '4' lower arm bushes)                                    |  | #505616 K                               |              |  |
| Vito  | W447, 448 ('14-'24) incl. 'E' Strut Mounts Camber & Caster                              |  | #506016 L                               | 14 #505226 K |  |
| Metris  | W639 ('03-'14) Lower arm bushes Camber & Caster   |  | #505116 K                               | #505126 K    |  |
| Valente   | W638, W639 ('03-'14) Front Camber only (See Page 11)                                    |  | #120216 D                               | #505126 K    |  |
| 2018-2024   | W177/A35/45/S, C118 CLA, 247B/X GLA STRUT TOPS (Precise Camber & Caster)                |  | 12 #506216-2 L                          |              |  |
|   | STAGE 2 (STREET/RACE)   |  | #506216-3 L                             |              |  |
|   | STAGE 3 (FULL RACE)   |  | #506216-4 M                             |              |  |
| REAR Extra Camber & Caster (Race days) lower arm (inner)  |   |  |   |              |  |
| 2012-2020   | W176/A45, C117 CLA, B246, X156 GLA STRUT TOPS (Precise Camber & Caster)                 |  | 8 #506116-2 L                           |              |  |
|   | STAGE 2 (STREET/RACE)   |  | #506116-3 L                             |              |  |
|   | STAGE 3 (FULL RACE)   |  | #506116-4 K                             |              |  |
| Extra Camber & Caster (Race days) lower arm (inner)   |   |  | 11 #120216 D                            | 14 #506126 K |  |
| '98-'20 Front Camber Only (See Page 11)   |   |  |   | #506128 K    |  |
| REAR ('13-'20) lower arm Camber (& extra Toe) bushes.   |   |  |   | #506128-1J   |  |
| Trail Arm front bushes - Contain side load / G Forces   |   |  |   |              |  |
| Upated bushes (8) - With above kits eliminates rear end flex.   |   |  |   |              |  |



**SIMPLY THE BEST....**

1964 - "EXPERIENCE" of Mnf. Adjustable Strut tops & Bushing kits  
LONGER THEN ANY OTHER BRAND !

**Mercedes - REAR "Camber & Extra Toe" Kit  
AMG W205 C63 'S' (Coupe) #502326-1K**

**\*K-MAC KIT ALSO INCLUDES EXTRA TOE ARM BUSHES TO  
ELIMINATE FLEX - PREVENT TOE CHANGE (OEM AMG  
"Coupe" Arms are H/Duty - but end mounts are soft rubber)**

**FORGED ALLOY LOWER ARMS (with inner slot)**

**FRONT - CAMBER & CASTER KITS ALSO MANUFACTURED**

- Lower inner adjustable bushings (up to 2°s Pos. or Neg.)
- Also upper inner wishbone bushings up to (1.5°s Pos. or Neg.)

**A REVOLUTION IN SIMPLIFIED ADJUSTMENT**

BUSH ROTATES INSIDE (stationary) OUTER SLEEVE means unlike other brands bushes can be inserted in any position! (not just one offset position of adjustment) allowing therefore precise change of adjustment.  
SIMPLY BY ROTATING BOLT HEADS.

**K-MAC UNIQUE PATENTED INTERLOCKING BOLT / BUSH DESIGN**

**Providing '4' times adjustment  
range of "one offset" plates Also  
single Wrench - "accurately" under load  
DIRECT ON ALIGNMENT RACK**

- \* K-MAC are designed to adjust lower arms (unlike upper Camber arms) retaining clearance top of tire to outer fender when wanting to reduce inner edge tire wear. Essential if wide profile tires / wheels fitted. Also K-MAC kits include extra Toe adjustment to compensate for the new Camber facility.

NOTE: KMAC UPPER ADJUSTABLE ARMS #502226-3M - Recommend only if wanting to increase Negative Camber / Clearance top of tire to outer fender.